



# GMT MONTHLY MEMBERSHIP PROGRESS REPORT

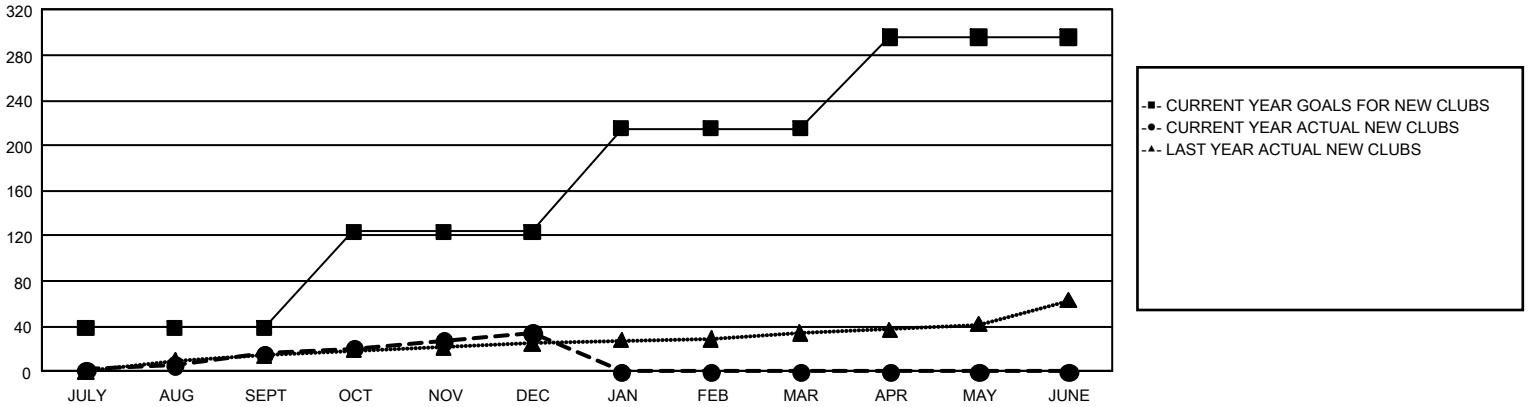
## GAT Constitutional Area 1

Results as of: 12/31/2023

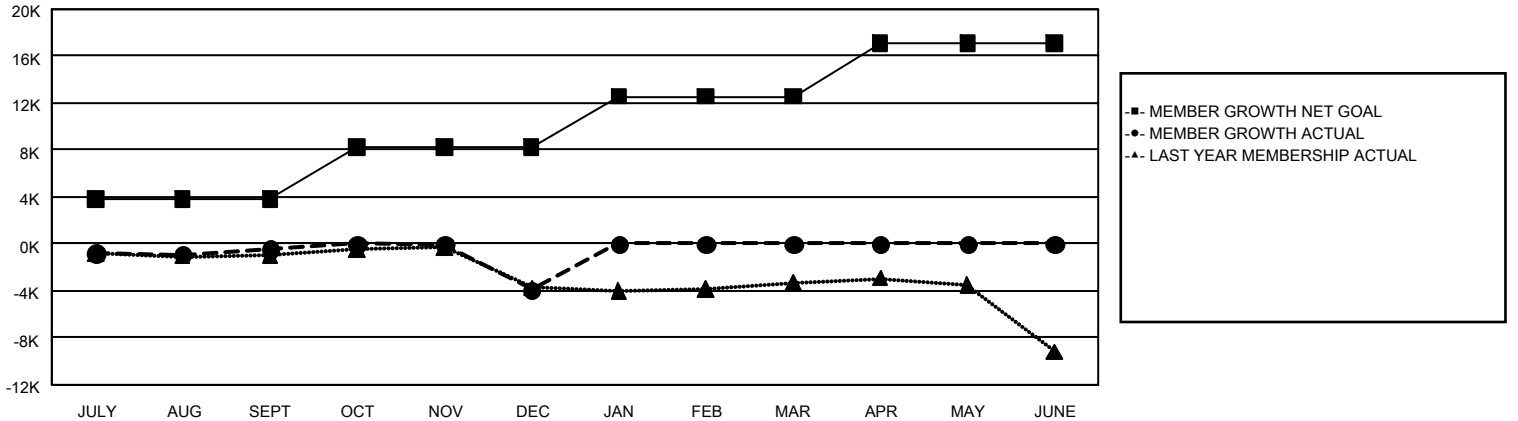
REPORT DOES NOT INCLUDE CLUBS IN UNDISTRICTED AREAS.

Clubs				Members			
RESULTS FOR 2023-2024				RESULTS FOR 2023-2024			
QUARTER	NEW CLUB GOAL	NEW CLUBS	DROPPED CLUBS	QUARTER	MEMBER GROWTH NET GOAL	MEMBER GROWTH ACTUAL	DROPPED MEMBERS ACTUAL (including transfers)
JULY/AUG/SEPT	39	16	62	JULY/AUG/SEPT	3,838	8,134	7,639
OCT/NOV/DEC	85	18	128	OCT/NOV/DEC	4,390	6,976	9,688
JAN/FEB/MAR	91	0	0	JAN/FEB/MAR	4,337	0	0
APR/MAY/JUNE	81	0	0	APR/MAY/JUNE	4,578	0	0

GOALS AND ACTUAL NEW CLUBS CUMULATIVE



GOALS AND ACTUAL MEMBERS CUMULATIVE



DROPPED CLUBS: 190	4,398 CLUBS OF 10,107 ADDED 1 OR MORE NEW MEMBERS	<u>GENDER DISTRIBUTION</u>	
<u>DROPPED MEMBERS</u>		MALE	167,209 (63.61%)
DECEASED	2,062	FEMALE	95,524 (36.34%)
CLUB CANCELLED	1,292	TOTAL FAMILY UNIT MEMBERS 50,893	
OTHER	13,972		
TOTAL	17,326		
<a href="#">CLICK HERE FOR CUMULATIVE MEMBERSHIP DATA</a>			